

inside®

FURNITURE & INTERIOR DESIGN



www.inside.ba



KO SMO MI? / Who are we?

Firma Ečo Company u okviru svog djelovanja posjeduje vlastiti dizajn studio i fabriku namještaja. Inside Design studio koncipiran je na modernom principu poslovanja u kojem djeluju arhitekti i dizajneri enterijera koji su u mogućnosti ispuniti i najkompleksnije zahtjeve svojih klijenata.

Kompletan proizvodni asortiman izrađuje se u Inside fabrici namještaja čija je misija da sve želje i zahtjeve klijenata pretvori u konkretan, visoko kvalitetan, funkcionalan, estetski primamljiv i dugotrajan proizvod.

Prilikom realizacije projekta opremanja enterijera Inside nudi i dodatni asortiman proizvoda koji uključuje ugradbenu kuhinjsku tehniku, rasvjetu, tepihe, tapete i dekoracije, čime zaokružuje svoju uslugu kroz koncept Total dizajna enterijera.

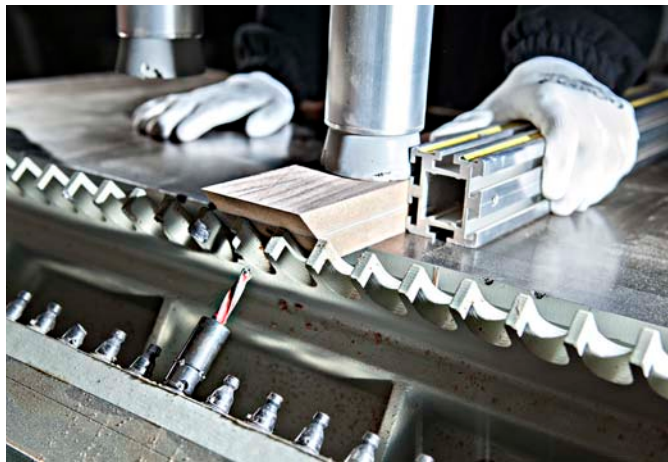
U toku dosadašnjeg poslovanja, Ečo Company je uspješno izveo preko 1300 rezidencijalnih i komercijalnih projekata na području BiH, regije, zemalja EU i GULF regije.

As part of its activities, Eco Company owns its own design studio and furniture factory. The Inside Design studio is based on a modern business principle in which architects and interior designers are able to fulfill even the most complex demands of their clients.

The complete product range is produced in the Inside furniture factory whose mission is to transform all wishes and demands of our clients into a concrete, high quality, functional, aesthetically seductive and long lasting product.

As a part of the project realization, Inside offers an additional product range which includes kitchen appliances, lighting, carpets, wallpapers and decorations, thus round up its service through the concept of total design of interiors.

In the course of the current business, Ečo Company has successfully carried out over 1300 residential and commercial projects in the territory of Bosnia and Herzegovina, the region, the EU countries and the GULF region.



ŠTA NUDIMO? / What we offer?

Naša firma prepoznaje značaj kvaliteta

Our company recognizes the importance of quality

Nudimo estetski primamljive, kvalitetne i funkcionalne proizvode

We offer aesthetically tempting, quality and functional products

Cjelokupan asortiman radi se po zahtjevima i željama naših klijenata

The entire assortment is manufactured in accordance with client's wishes and requirements

Kvalitet ponude i usluge koju pruža naša firma određuje klijent

The quality of the offer and services provided by our company is determined by our clients

Kombiniramo inovativnu tehnologiju, stručnost osoblja i prepoznatljiv stil

We combine innovative technology, expertise of staff and recognizable style

Stvaramo jedinstvena rješenja za potrebe naših klijenata

We create unique solutions for the needs of our clients

Svoj cjelokupan uspjeh dijelimo sa drugima

We share our entire success with others

1
2
3
4
5
6
7

INSIDE TIM

Inside team



Edin Begić, ma.arch.
Arhitekt/Architect
edin.begic@inside.ba



Saliha Karahmet, ma.arch.
Arhitekt/Architect
saliha.karahmet@inside.ba



Amel Hodža, ing.aedif.
Arhitekt/Architect
amel.hodza@inside.ba



Mladen Šašić, ma.arch.
Arhitekt/Architect
mladen.sasic@inside.ba



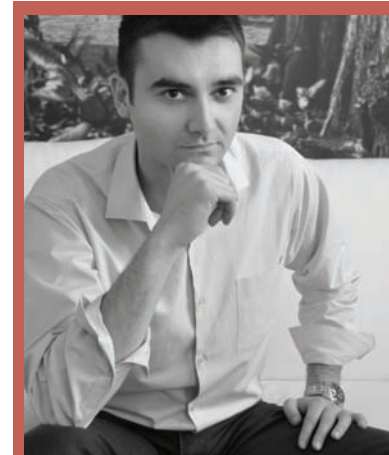
Maida Dedić, dipl.ing.arch.
Arhitekt/Architect
maida.dedic@inside.ba



Srđan Dautbegović, ma.arch.
Arhitekt/Architect
srdjan.dautbegovic@inside.ba



Željko Batinić, M.S.M.E.
Šef odjela QMS-a / Head of QMS Department
zeljko.batinic@inside.ba



Armin Karahodžić, MSc
Program menadžer/Program manager
armin.karahodzic@inside.ba



Kerim Karajko, ing.arch.
Arhitekt/Architect
kerim.karajko@inside.ba



ENERGY

Sofa koju odlikuje izuzetna udobnost. Posjeduje leđni relax mehanizam, koji sofou pretvara u pomoćni ležaj. Zbog svog izgleda preporučujemo je prvenstveno za mlađu populaciju.

Sofa characterized by exceptional comfort. It has back relax mechanism, which converts this sofa into a bed. Because of their appearance, we recommend it primarily for the younger population.



DANCE

Jedna od najudobnijih ugaonih sofa. Njeni jastuci daju osjećaj potpune mekoće i uživanja. Dodatnu ljepotu daju njene tanke stranice i veoma je pogodna za prostore različite namjene. Modernog je stila i savršen izbor za mlađu populaciju.

One of the most comfortable corner sofas. Her pillows provide a feeling of complete softness and enjoyment. Additional beauty is provided by its thin sides and it is very suitable for rooms of various purposes. The modern style makes it a perfect choice for the younger population.





EJORD

Izuzetno luksuzna sofa. Njena specifična konstrukcija i udobnost upotpunjuju svaki prostor i čine ga ekskluzivnijim.

Extremely luxurious sofa. Its specific design and comfort complement each space and makes it more exclusive.



BLOCK

Ugaona sofa koja se uklapa u različite vrste enterijera. Njena specifičnost leži u tome što je rađena iz više segmenata te upravo zbog toga pruža mogućnost kombinovanja različitih dizajnerskih rješenja.

Corner sofa that fits into the different types of interiors. Its specificity is that it is made in several segments which enables combination of different design solutions.





Mini Form

FAVORI

Specifična zbog svog zaobljenog dijela i pomičnog mehanizma za naslon glave u više pozicija. Njen izgled i funkcionalnost upotpunjuju različite enterijere.

Specific because of its curved portion and the moving mechanism for the back of the head in multiple positions. Its appearance and functionality complement different interiors.



POLARIS

Ugaona sofa koja je jedinstvena zbog svojih tankih stranica i zanimljivih štepova na sjedećem dijelu. Mogućnost izbora boje i različitih modifikacija.

Corner sofa that is unique because of its thin sides and interesting stitches on the sitting area. We offer possibility of choosing colors and various modifications.



KUHINJE PO MJERI

Custom made kitchens

Pločasti namještaj Inside kolekcije karakterizira visok nivo kvaliteta koji je rezultat pažljivog vođenja svake faze, od crteža do gotovog proizvoda. Upotreba kvalitetnih repromaterijala i okova vodećih evropskih proizvođača osigurava postojanost i funkcionalnost namještaja. Proizvodni pogoni kompanije su opremljeni najsavremenijim mašinama za obradu pločastog namještaja. U mogućnosti smo da obradimo sve vrste drveta i drvenih panela, uključujući furnir, iveral, MDF- medijapan i masivno puno drvo.

Plain furniture of Inside collection is characterized by a high level of quality that is the result of careful handling of each stage, from drawing to finished product. The use of quality raw materials and fittings from leading European manufacturers ensures the stability and functionality of furniture. The company's production facilities are equipped with most contemporary machine tools for the processing of laminated furniture. We are able to process all types of wood and wooden panels, including veneer, lveral, MDF-medium and large wood.



Form



U OKVIRU NAŠEG ASORTIMANA
 KUHINJA NUDIMO:
 Within our range of
 kitchens we offer:

1. Extravagant
2. Economic
3. Standard
4. Exclusive



Carmen



Europa



Neve

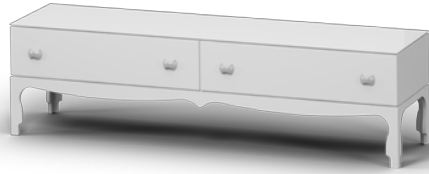
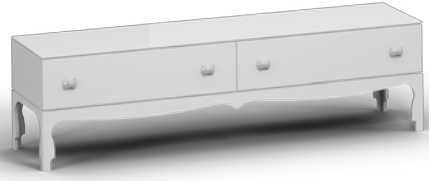


Parker



Giselle

SPAVAČE SOBE Bedroom



Etida

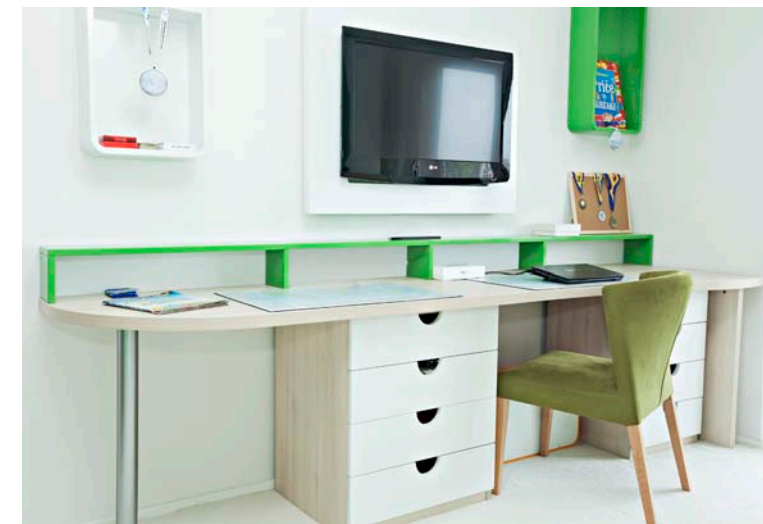
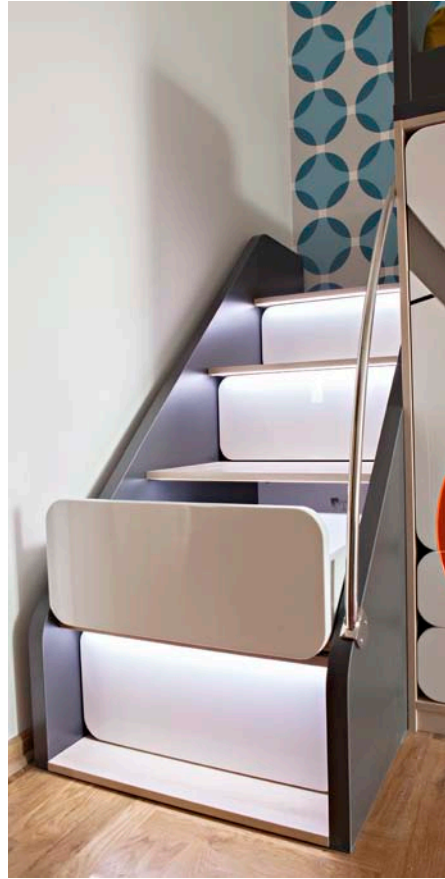


Linea



DJEČIJE SOBE

Childrens room



DIZAJN I OPREMANJE ENTERIJERA

inside[®]
FURNITURE & INTERIOR DESIGN

Pijačna 6, 71 000 Sarajevo, Bosna i Hercegovina
Tel: +387 33 766 800 | Fax: +387 33 766 801



www.inside.ba

